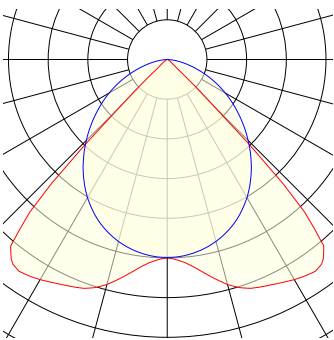
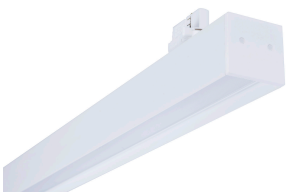


Nano-X 2400, version 11L D2 47 F8 AS 6

There are more versions of **Nano-X 2400** available at lival.com
High lumen output and excellent glare control makes Nano-X a perfect fit for retail and office use. Fitted with opal lens for general lighting purposes.



Lightsource	LED
Article Number	11L D2 47 F8 AS 6
Family Name	Nano-X 2400
Luminaire Type	Linear
Adapter Type	Array
Mounting Type	Array
Light Source Product Name	TCI LED Nano1200 830/3000K
Control Gear	on/off, DALI
Light Distribution	Array
Wattage	160 W
Luminous Flux	13755 lm
Efficacy (lm/W)	86 lm/W
COB Flux	11600 lm
Color Temperature	3000K
Color Rendering Index	Ra 80
Color Of Housing	White
IP Rating	20
Lifetime	50 000h (L80 B10)
Light Source Options	CRI 80+ 2700K, 3000K, 4000K, 5000K CRI 90+ 2700K Below BBL, 3000K Below BBL, 3500K Below BBL, 4000K Brilliant vivid 3000K, 4000K, 5000K Meat 2000K, Bakery 2400K
Color Consistency	MacAdams 3 SDCM
Material	Powder painted die-cast aluminium
UGR	21.8



For more information and DLX & LDT downloads visit us at lival.com. We are more than happy to reply to your email at lival@lival.com or your call at +358-9-235 511