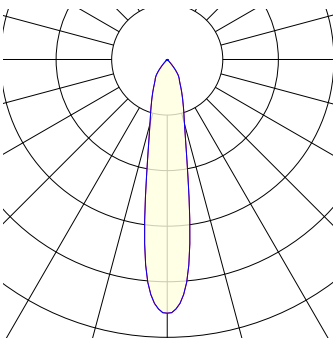
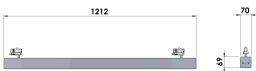
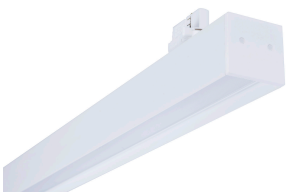


Nano-X 1200, version 11M D0 48 F8 G4 9

There are more versions of **Nano-X 1200** available at lival.com
High lumen output and excellent glare control makes Nano-X a perfect fit for retail and office use. Extremely efficient glare reduction with microprismatic lens and black glare screen louver.



Lightsource	LED
Article Number	11M D0 48 F8 G4 9
Family Name	Nano-X 1200
Luminaire Type	Linear
Adapter Type	Array
Mounting Type	Array
Light Source Product Name	TCI LED Nano1200 840/4000K
Control Gear	on/off, DALI
Light Distribution	Array
Wattage	81 W
Luminous Flux	6687 lm
Efficacy (lm/W)	83 lm/W
COB Flux	12100 lm
Color Temperature	4000K
Color Rendering Index	Ra 80
Color Of Housing	Black
IP Rating	20
Lifetime	50 000h (L80 B10)
Light Source Options	CRI 80+ 2700K, 3000K, 4000K, 5000K CRI 90+ 2700K Below BBL, 3000K Below BBL, 3500K Below BBL, 4000K Brilliant vivid 3000K, 4000K, 5000K Meat 2000K, Bakery 2400K
Color Consistency	MacAdams 3 SDCM
Material	Powder painted die-cast aluminium
UGR	21.8



For more information and DLX & LDT downloads visit us at lival.com. We are more than happy to reply to your email at lival@lival.com or your call at +358-9-235 511