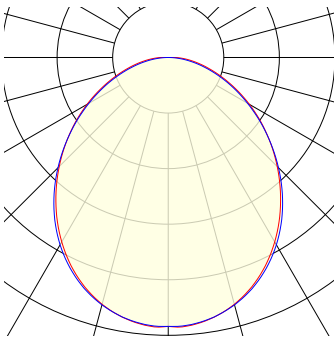
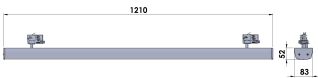
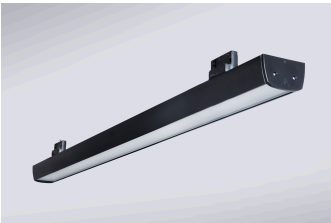


# Nano 1200, version 15V D0 47 F8 98 9

There are more versions of **Nano 1200** available at [lival.com](http://lival.com)  
Linear luminaire with excellent energy efficiency and lumen output.  
Quick GA-69 adapters. Opal diffuser creates soft light for general lighting.



Lightsource	LED
Article Number	15V D0 47 F8 98 9
Family Name	Nano 1200
Luminaire Type	Linear
Adapter Type	Array
Mounting Type	Array
Light Source Product Name	TCI LED Nano1200 830/3000K
Control Gear	on/off, DALI
Light Distribution	Array
Wattage	80 W
Luminous Flux	9726 lm
Efficacy (lm/W)	122 lm/W
COB Flux	11600 lm
Color Temperature	3000K
Color Rendering Index	Ra 80
Color Of Housing	Black
IP Rating	23
Lifetime	50 000h (L80 B10)
Light Source Options	CRI 80+ 2700K, 3000K, 4000K, 5000K CRI 90+ 2700K Below BBL, 3000K Below BBL, 3500K Below BBL, 4000K Brilliant vivid 3000K, 4000K, 5000K Meat 2000K, Bakery 2400K
Color Consistency	MacAdams 2 SDCM
Material	Powder painted die-cast aluminium
UGR	29.2



For more information and DLX & LDT downloads visit us at [lival.com](http://lival.com). We are more than happy to reply to your email at [lival@lival.com](mailto:lival@lival.com) or your call at +358-9-235 511